



**Holotype of *Orphanodendron bernalii* Barneby &
J.W. Grimes [family CAESALPINIACEAE]**

<http://plants.jstor.org/specimen/col000001712>

<http://www.jstor.org>

Your use of the JSTOR archive indicates your acceptance of JSTOR's Terms and Conditions of Use, available at <http://www.jstor.org/page/info/about/policies/terms.jsp>. JSTOR's Terms and Conditions of Use provides, in part, that unless you have obtained prior permission, you may not download an entire issue of a journal or multiple copies of articles, and you may use content in the JSTOR archive only for your personal, non-commercial use.

Please contact the contributing partner regarding any further use of this work. Partner contact information may be obtained at <http://plants.jstor.org/page/about/plants/PlantsProject.jsp>.

Each copy of any part of a JSTOR transmission must contain the same copyright notice that appears on the screen or printed page of such transmission.

JSTOR is a not-for-profit service that helps scholars, researchers, and students discover, use, and build upon a wide range of content in a trusted digital archive. We use information technology and tools to increase productivity and facilitate new forms of scholarship. For more information about JSTOR, please contact plants@jstor.org.

Holotype of *Orphanodendron bernalii* Barneby & J.W. Grimes [family CAESALPINIACEAE]

Herbarium

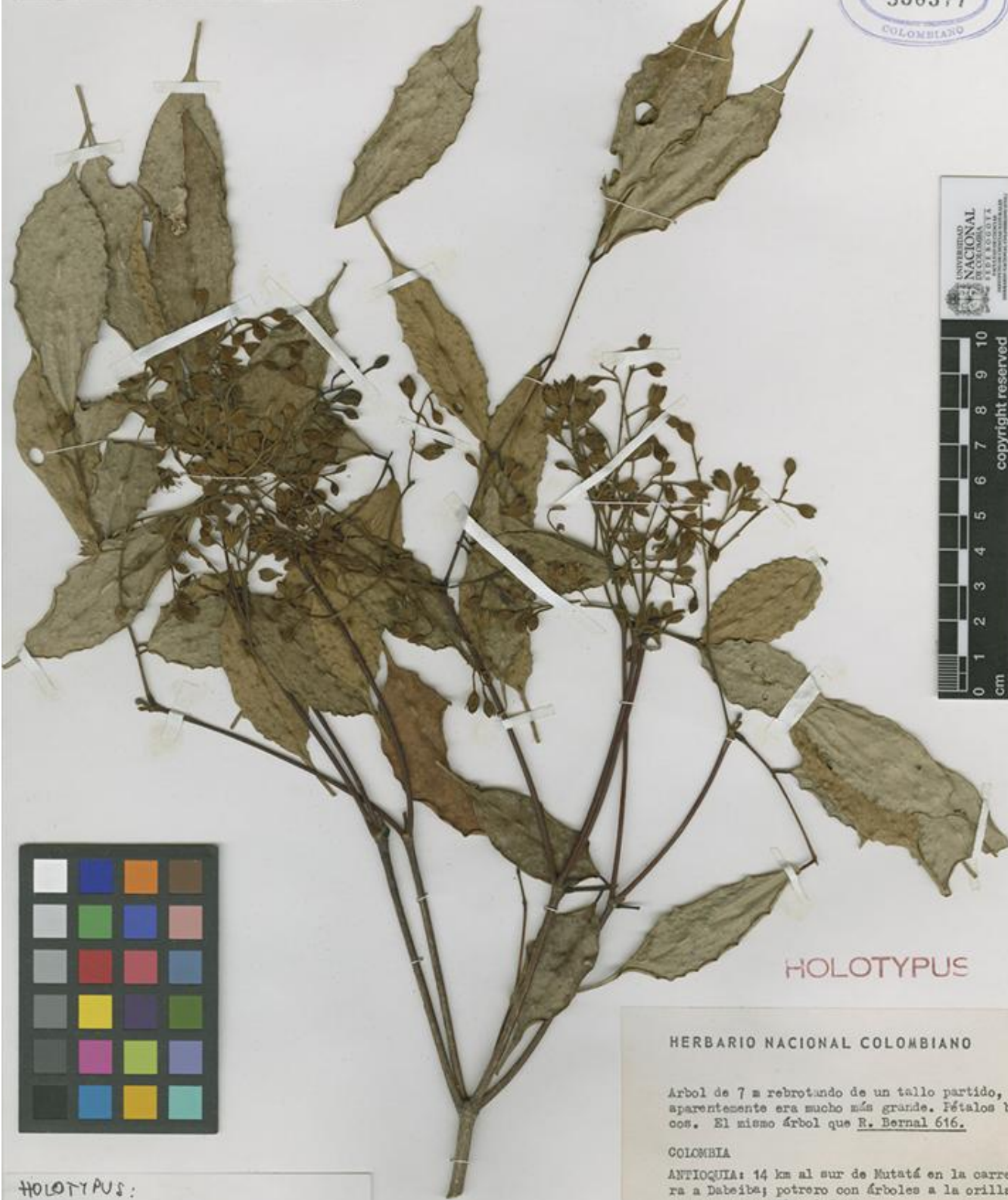
Collection	Type Specimens
Resource Type	Specimens
Collector	Bernal, R.; Henao, L. G.; Restrepo, D. L., #1482
Collection date	1988/7/19
Locality	Antioquia: 14 Km. al sur de Mutat, en la carretera a Dabeiba.
Country	Colombia (Colombia)
Collection altitude	350 meters
Identifications	Holotype of <i>Orphanodendron bernalii</i> Barneby & J.W. Grimes [family CAESALPINIACEAE] (stored under name);
Notes	rbol de 7 m. rebrotando de un tallo partido, que aparentemente era mucho ms grande. Ptalos blancos.
Pages	1
Data last modified	2008-06-06

<http://plants.jstor.org/specimen/col000001712>

HERBARIO NACIONAL COLOMBIANO



COLO00001712



HOLOTYPUS

HERBARIO NACIONAL COLOMBIANO

Arbol de 7 m rebrotando de un tallo partido, que aparentemente era mucho más grande. Pétalos blancos. El mismo árbol que R. Bernal 616.

COLOMBIA

ANTIOQUIA: 14 km al sur de Mutatá en la carretera a Dabeiba; potrero con árboles a la orilla de la carretera. Alt. 350 m.

R. Bernal, L. G. Henao &

Nº. 1482

D. L. Restrepo

19-VII-1988

HOLOTYPUS:

HERBARIO NACIONAL COLOMBIANO

Orphanodendron bernalii Balseby & Grimes

Brittonia 42(4):249-253. 1990.