



**Filed as *Sedum kotschyanum* Boiss. [family
CRASSULACEAE]**

<http://plants.jstor.org/specimen/bm000946664>

<http://www.jstor.org>

Your use of the JSTOR archive indicates your acceptance of JSTOR's Terms and Conditions of Use, available at <http://www.jstor.org/page/info/about/policies/terms.jsp>. JSTOR's Terms and Conditions of Use provides, in part, that unless you have obtained prior permission, you may not download an entire issue of a journal or multiple copies of articles, and you may use content in the JSTOR archive only for your personal, non-commercial use.

Please contact the contributing partner regarding any further use of this work. Partner contact information may be obtained at <http://plants.jstor.org/page/about/plants/PlantsProject.jsp>.

Each copy of any part of a JSTOR transmission must contain the same copyright notice that appears on the screen or printed page of such transmission.

JSTOR is a not-for-profit service that helps scholars, researchers, and students discover, use, and build upon a wide range of content in a trusted digital archive. We use information technology and tools to increase productivity and facilitate new forms of scholarship. For more information about JSTOR, please contact plants@jstor.org.

Filed as Sedum kotschyannum Boiss. [family CRASSULACEAE]

<http://plants.jstor.org/specimen/bm000946664>

Persien. Shiraz. *Sedum Kotschyana*
No: 423.

Sedum

Corolla ad margines rosea

Sedum frutescens Linn. var. *puberula*

Jan 25 Novy 1842.

Th. Ry.



HERB. H. F. HANCE. - No. 1867.

20306.

Sedum, Linn.
Kotschyana, Boiss.
O. N. Crassulaceae.
In m. Jankovs, Persiae
austro-occid., Julis 1868,
legit Prof. Haussknacht.



Persia Australis - Kotschy.

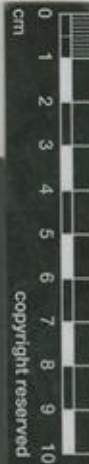
Th. Kotschy. Pl. Pers. austr. Ed. R. F. Haussknacht. 1845.

423. *Sedum Kotschyana*
Boiss. n. sp.

(A. S. callicroo diffeet glandulis, floribus longe pedicellatis, carpellis obtusis mucronatis, nec attenuatis acutis.)
Petala margine rosea.

In locis humidis merid. v. spectantibus in m. Sabot. Eusebium prope a. Schiras. D. 25. Maj. 1842.

120746



Copyright reserved



Sedum Kotschyana, Boiss., Diag. 6, p. 56