



**Type of *Aphanes bonifaciensis* (Buser) Holub
[family ROSACEAE]**

<http://plants.jstor.org/specimen/bm000750819>

<http://www.jstor.org>

Your use of the JSTOR archive indicates your acceptance of JSTOR's Terms and Conditions of Use, available at <http://www.jstor.org/page/info/about/policies/terms.jsp>. JSTOR's Terms and Conditions of Use provides, in part, that unless you have obtained prior permission, you may not download an entire issue of a journal or multiple copies of articles, and you may use content in the JSTOR archive only for your personal, non-commercial use.

Please contact the contributing partner regarding any further use of this work. Partner contact information may be obtained at <http://plants.jstor.org/page/about/plants/PlantsProject.jsp>.

Each copy of any part of a JSTOR transmission must contain the same copyright notice that appears on the screen or printed page of such transmission.

JSTOR is a not-for-profit service that helps scholars, researchers, and students discover, use, and build upon a wide range of content in a trusted digital archive. We use information technology and tools to increase productivity and facilitate new forms of scholarship. For more information about JSTOR, please contact plants@jstor.org.

Type of *Aphanes bonifaciensis* (Buser) Holub [family ROSACEAE]

Herbarium	Natural History Museum (BM), BM000750819
Collection	Type Specimens
Resource Type	Specimens
Collector	, #
Collection date	1885-04-20
Locality	Porto (Corse)
Country	France (France)
Identifications	Type of <i>Aphanes bonifaciensis</i> [family] (stored under name); Verified by Josef Ludwig Holub, 1967-01-Isolectotype of <i>Alchemilla microcarpa</i> ssp. <i>bonifaciensis</i> [family]; Verified by Peter Frost-Olsen, Not On SheetIsolectotype of <i>Alchemilla pseudominor</i> [family]; Verified, Not On Sheet <i>Aphanes microcarpa</i> [family]; Verified by J. Hervier, Not On Sheet
Notes	The original specimen label identified <i>Alchemilla microcarpa</i> Boiss. & Reut. T. Holub (1967) and P. Frost-Olsen (2000) both determined it <i>Aphanes bonifaciensis</i> (Buser) Holub. P. Frost-Olsen (2000) also determined this an isolectotype of <i>Alchemilla microcarpa</i> Boiss. & Reut. subsp. <i>bonifaciensis</i> Buser. " <i>Alchemilla pseudominor</i> " type information inherited from previous KeEMU entry.
Data last modified	2011-03-18

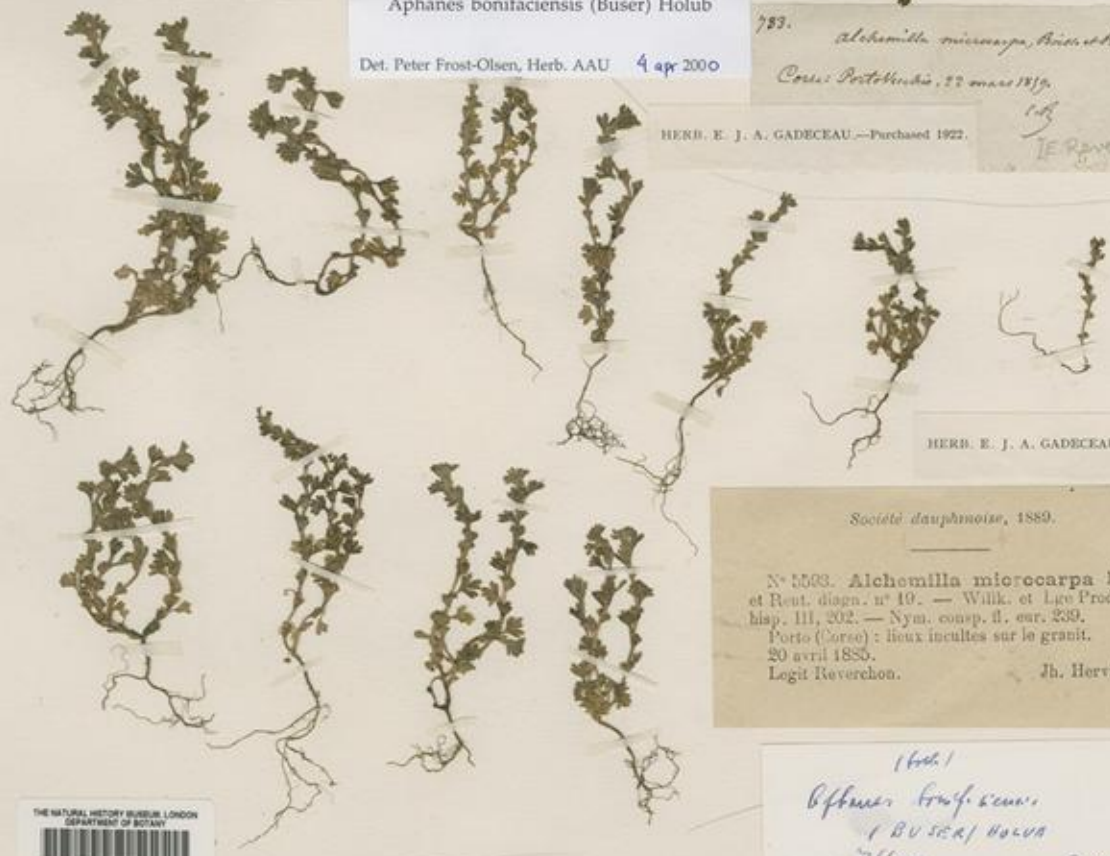
<http://plants.jstor.org/specimen/bm000750819>



THE NATURAL HISTORY MUSEUM LONDON
DEPARTMENT OF BOTANY
BM00060875

Aphanes bonifaciensis (Buser) Holub
Det. Peter Frost-Olsen, Herb. AAU 4 apr 2000

783. *Alchemilla microcarpa*, Boiss. et Reut.
Corse: Pustolunco, 22 mars 1859.
[E. Reuter]
HERB. E. J. A. GADECEAU.—Purchased 1922.



HERB. E. J. A. GADECEAU.—Purchased 1922.

Société dauphinoise, 1869.
N° 5593. *Alchemilla microcarpa* Boiss.
et Reut. diagn. n° 19. — Walk. et Ligo Prodr. fl.
hispan. III, 202. — Nym. consp. fl. eur. 239.
Porto (Corse): lieux incultes sur le granit.
20 avril 1859.
Logit Reverchon. Jb. Heritier.

(Holub)
Aphanes bonifaciensis
(Buser) Holub
DET. Holub 19. 67

THE NATURAL HISTORY MUSEUM LONDON
DEPARTMENT OF BOTANY
BM000750819

ISOLECTOTYPE of
Alchemilla microcarpa Boissier & Reuter subsp. *bonifaciensis* Buser
in J. Briquet, *Prodrome de la flore Corse* 2(1): 204, 1913.
P. Frost-Olsen, Herbarium AAU



Aphanes bonifaciensis (Buser) Holub
Det. Peter Frost-Olsen, Herb. AAU 4 apr 2000

